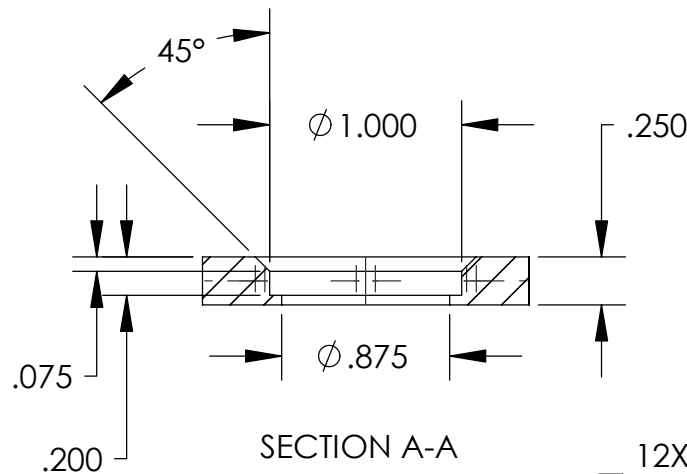
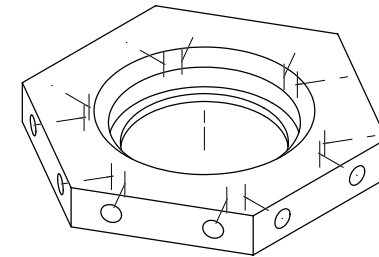
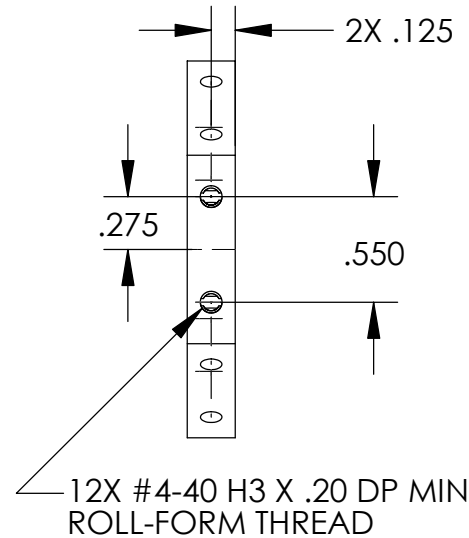
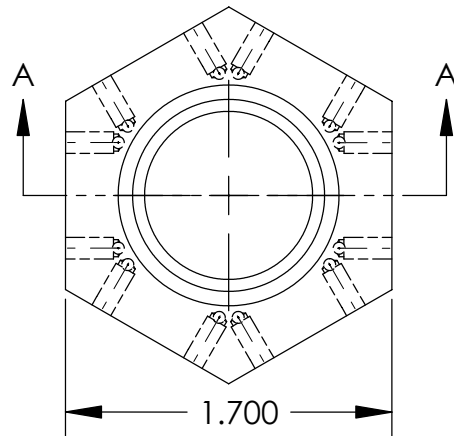
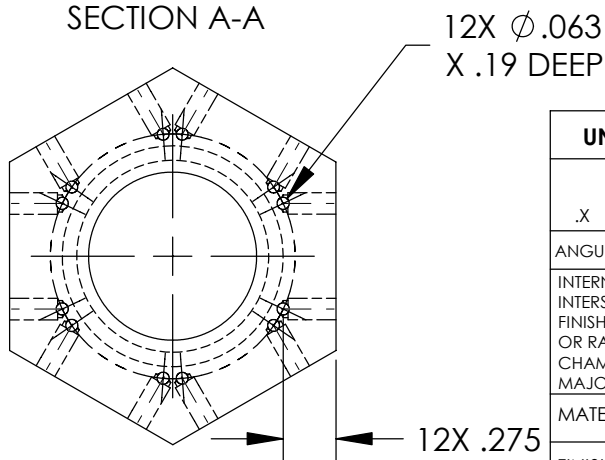


REVISIONS		
REV	DESCRIPTION	DATE
B	ID was 1.00, added #4 holes	6/11/2003
C	Added vent holes	6/25/2003
D	ID was 1.125"	6/27/2003



- NOTES:
1. TAPPED HOLES MUST NOT BREAK THRU.
 2. VENT HOLES MUST INTERSECT THREADED HOLE.
 3. 1.000" DIAMETER TO BE CLOSE SLIP ON OD OF P/N -071.



UNLESS OTHERWISE SPECIFIED:

DIMENSIONS ARE IN INCHES
DECIMAL TOLERANCES:
.X ±.030 .XX ±.015 .XXX ±.005

ANGULAR TOL: ± 1° SURFACE ROUGHNESS: 63/

INTERNAL AND EXTERNAL SURFACE
INTERSECTIONS SHALL BE UNIFORMLY
FINISHED WITH CHAMFER .005/.010 X 45°
OR RADIUS .005/.010.
CHAMFER ALL THREADED HOLES 110° OF
MAJOR DIAMETER X 45°

MATERIAL: **101 (OFHC) Copper**

FINISH: **NONE**

High Precision Devices

1668 Valtac Lane, Suite C, Boulder, Colorado 80301
Phone: (303) 447-2558 Fax: (303) 447-2548 Web Site: www.hpd-online.com

TITLE: **p02101-047 Flange, He intercept**

CONFIGURATION: **00-Default**

SIZE	QTY PER ASSM:	SCALE:	SHEET	OF	REV
A	2	1:1	1	1	D
DATE:	5/19/2004	DRAWN BY:	C. Danaher		